

CYG Insulator Co.,Ltd.(CYG Insulator), the leading composite insulator manufacturer in china, a controlled subsidiary of Changyuan Technology Group Ltd.(SH: 600525), established in 1994 ,is an national hi-tech enterprise specially engaged in the research & design, manufacture and sales of composite insulators for transmission line(TL), substation(SS), distribution line(DL), electrical railway(Rail), composite insulation components(CIC) and composite surge arrester for distribution line(CSA).

CYG Insulator has the capacity and ability of researching, manufacturing and inspection both $\pm 1100\text{kV}$ HVDC and 1100kV HVAC and below voltage. The factory has the advanced manufacturing facilities covering two sets of 100% auto silicone rubber lines, over 30sets of whole injection machines along with 300 injection moldings and over 10 sets finpower-made crimping machines. Also CYG Insulator has the test & inspection facilities covering the chemical/Physical lab, Mechanical Lab, Aging Lab and Electrical Lab.

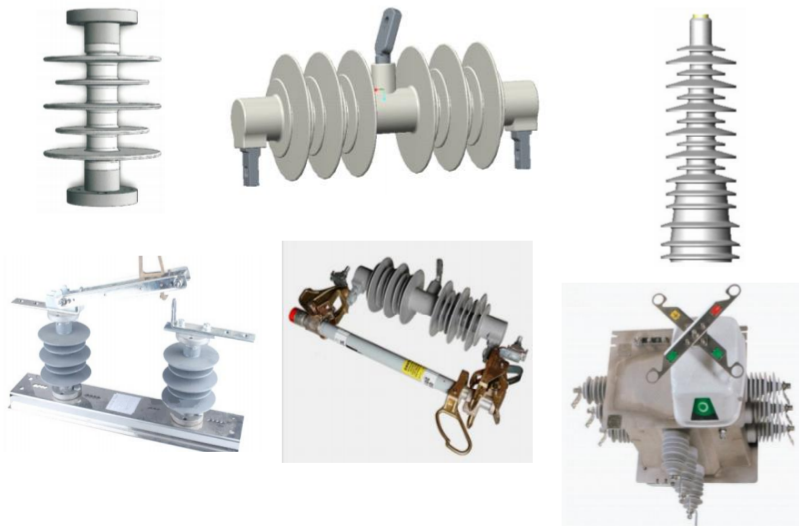
Now CYG Insulator has been one of the biggest famous insulators' company in manufacturing technology, production capacity, product quality and market shares. And his products have recognized and praised by various consumers worldwide

CYG Insulator is certified by ISO 9001/ISO14001/ISO45001

PHYSICAL AND CHEMICAL LABORATORY



COMPOSITE INSULATION COMPONENTS



Composite Insulation Components offer the ultimate solution in improved performance. Because of its hydrophobicity, this material inherently resists water filming thereby limiting leakage currents. Composite Insulation Components with reduced leakage currents, even when contaminated, require less frequent washing. The savings in such maintenance costs are added benefits of using silicone insulators.

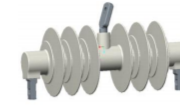
Application: Composite Insulation Components are used for complete sets of equipment related to distribution networks, such as fuses, isolation switches, load switches, switchgear, etc., to provide mechanical support and electrical insulation.

Component: Composite Line Post Insulators are consisted of E-CR fiber reinforced polymer rod, metal fitting and housing materials. The glass must be electrically and chemically stable (ECR glass) and the housing(including the sheath and sheds) must be HTV silicone rubber with high hydrophobicity and high tracking & erosion resistance performance.

Technology Innovation: For HTV SR, CYG has its own patent formula and its own patent of the production process; For process, CYG creates the unique whole molding injection/sealing process

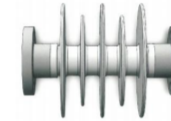
CATAGLOGUE FOR INSULATION COMPONENTS

Outdoor drop type fuse composite insulator



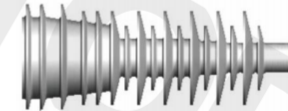
| SN | Voltage (kV) | SToL (N*m) | Minimum Leakage Distance (mm) | Dry Lightning impulse withstand voltage(KV) | Wet Power Frequency withstand Voltage (kV) |
|----|--------------|------------|-------------------------------|---|--|
| 1 | 12 | 81~89 | 375 | 90 | 30 |
| 2 | 15.5 | 81~89 | 375 | 90 | 30 |
| 3 | 27 | 81~89 | 675 | 150 | 36 |
| 4 | 38 | 81~89 | 950 | 170 | 60 |

Isolation switch composite insulator



| SN | Voltage (kV) | SCL (kN) | SToL (N*m) | Minimum Leakage Distance (mm) | Dry Lightning impulse withstand voltage(KV) | Wet Power Frequency withstand Voltage (kV) |
|----|--------------|----------|------------|-------------------------------|---|--|
| 1 | 12 | 2~3 | 160~300 | 380~496 | 1600/145 | 190 |
| 2 | 15 | 6 | 475 | 514 | 1200 | 160 |
| 3 | 27 | 6 | 475 | 514 | 1400 | 175 |
| 4 | 38 | 6 | 475 | 712 | 1600 | 190 |

Composite bushing for outgoing line of load switch



| SN | Voltage (kV) | Rated current (A) | Height (mm) | Dry Lightning impulse withstand voltage(KV) |
|----|--------------|-------------------|-------------|---|
| 1 | 12 | 630 | 225 | 90 |
| 2 | 24 | 630 | 365 | 125 |

Remark:

- 1) All the designs are in accordance with the ANSI/IEC relative standards and can also be customized as per actual request.
- 2) The other type of end fittings are also available if needed.